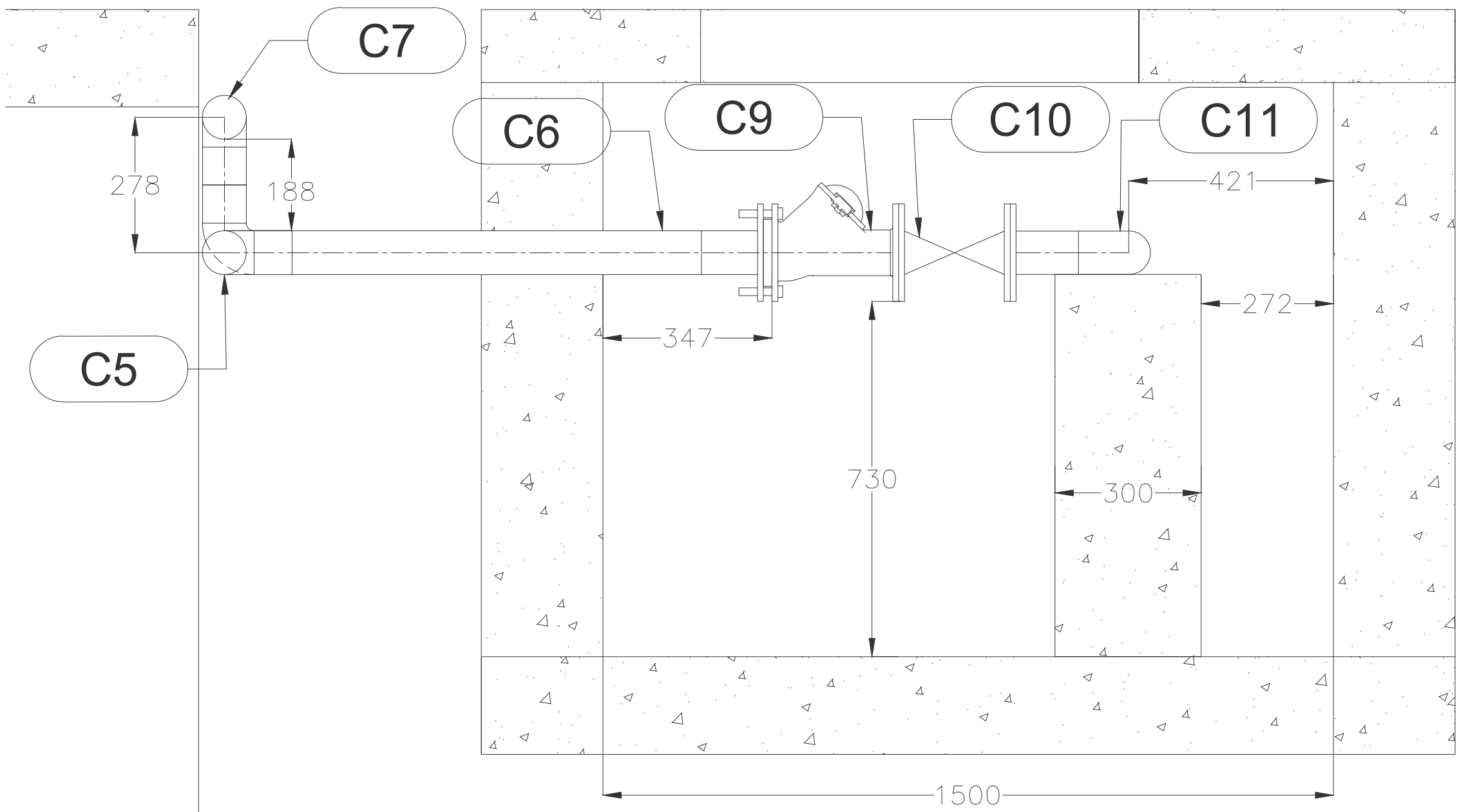
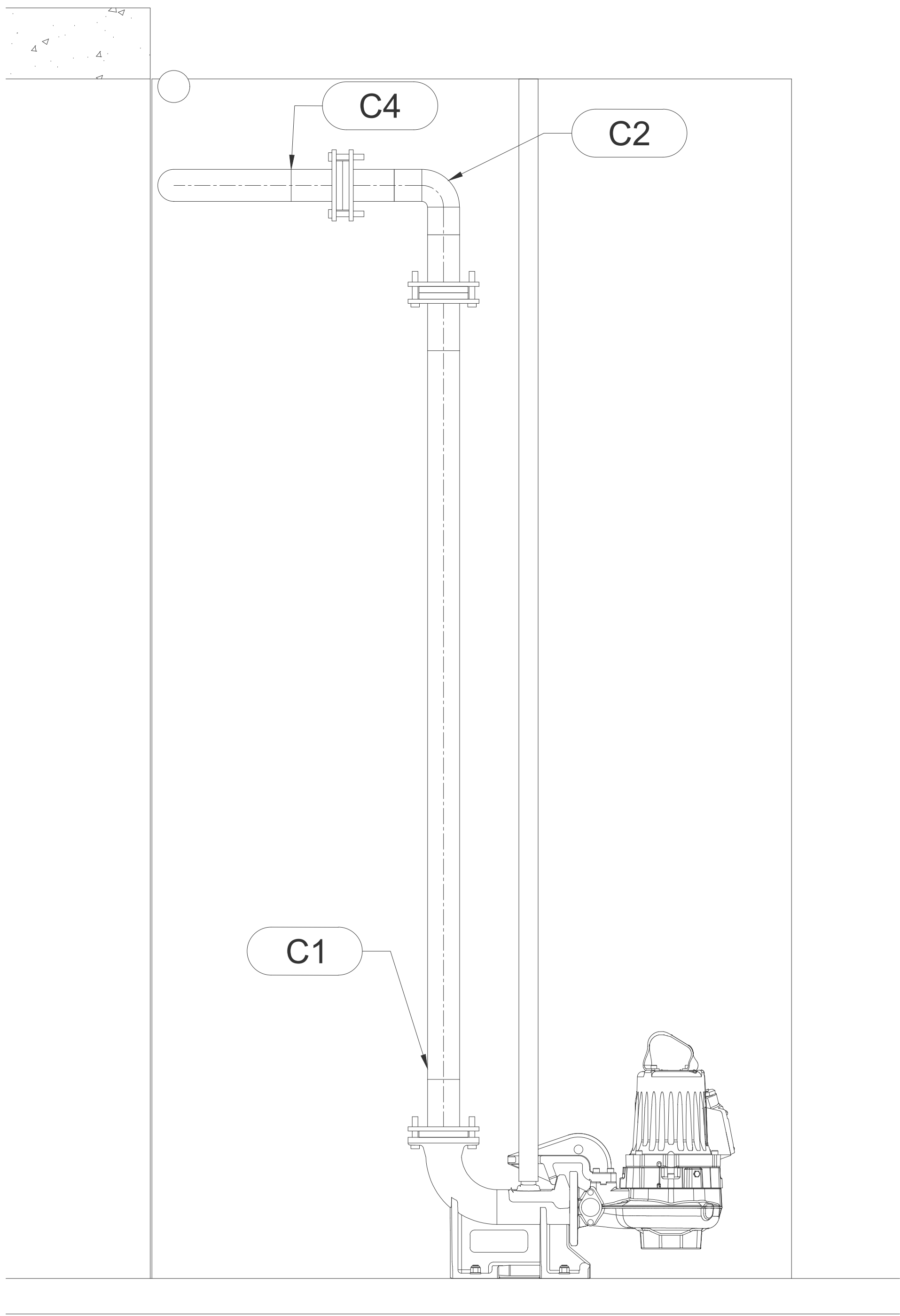


PLAN VIEW RE-USE PIPEWORK
SCALE 1:10



SECTION B-B
SCALE 1:10



SECTION A-A
SCALE 1:10

NOTES:



ISSUED FOR TENDER

0 50
100 MILLIMETRES ON ORIGINAL DRAWING

Ⓐ BEFORE CONTRACT COMMENCES
Ⓐ AFTER CONSTRUCTION CONTRACT HAS COMMENCED

| Nr. | DATE | AMENDMENTS |
|-----|------|------------|
| | | |
| | | |
| | | |

COPYRIGHT IS VESTED IN V3 CONSULTING ENGINEERS
IN TERMS OF THE COPYRIGHT ACT (ACT 98 OF 1978)



V3 CONSULTING ENGINEERS

T: +27 51 045 1950

Suite 31, Nobel House, 196 Nelson Mandela Road,
Brandwag, Bloemfontein, 9301

CE
Consulting Engineers

PROJECT
TSHIAME WWTW REFURBISHMENT

DRAWING DESCRIPTION
RE-USE PIPEWORK

| DRAWING NO. | REVISION |
|------------------|----------|
| 10909001-6012-01 | T1 |

| | | | |
|----------------------|---|----------------------|---------------------|
| DESIGNED: | AK | CHECKED: | AK |
| DRAWN: | AK | ECSA PR No: 20130658 | <i>Jo. de laune</i> |
| APPROVED: | <i>Jo. de laune</i> | SCALE: | AS SHOWN A0 |
| ECSA PR No: 20130658 | | INCEPTION DATE: | SEPT'24 |
| FILE PATH: | SHAREPOINT / BLOEMFONTEIN - 10909001 TSHIAME WWTW / 04 DOC PROC / 04 DRAW | | |



VIRTUAL
CONSULTING ENGINEERS

ISSUED FOR TENDER